

# Prairie Land Regional Division # 25



## Satisfaction Survey Results Summary

2007 – 2008



## Prairie Land Regional Division No. 25 Five-Year Partnership Results Summary

### Student Survey: Percentage Who Strongly Agree or Agree With Statement

Vertical lines: Partnership High / Low  
Horizontal Line: Your Jurisdiction's Result

		2004	2005	2006	2007	2008	
1. I feel welcome at school.	Partnership High	93%	94%	94%	94%	94%	
	Partnership Low	88%	89%	88%	89%	90%	
	<b>Jurisdiction Result</b>	<b>91%</b>	<b>94%</b>	<b>93%</b>	<b>94%</b>	<b>94%</b>	
	Small Rural Jurisdiction Average	91%	92%	91%	90%	92%	
	Partnership Average	92%	91%	92%	91%	93%	
2. I am clear on what I am expected to learn.	Partnership High	93%	94%	94%	95%	95%	
	Partnership Low	90%	89%	89%	88%	90%	
	<b>Jurisdiction Result</b>	<b>90%</b>	<b>93%</b>	<b>94%</b>	<b>95%</b>	<b>95%</b>	
	Small Rural Jurisdiction Average	92%	92%	93%	92%	92%	
	Partnership Average	92%	92%	92%	92%	93%	
3. I feel other students in my school care about me.	Partnership High	83%	82%	81%	83%	84%	
	Partnership Low	73%	71%	73%	73%	74%	
	<b>Jurisdiction Result</b>	<b>77%</b>	<b>80%</b>	<b>80%</b>	<b>81%</b>	<b>83%</b>	
	Small Rural Jurisdiction Average	78%	78%	79%	77%	81%	
	Partnership Average	76%	76%	77%	77%	79%	
4. The staff at my school care about their students.	Partnership High	91%	93%	91%	94%	93%	
	Partnership Low	83%	85%	83%	86%	86%	
	<b>Jurisdiction Result</b>	<b>88%</b>	<b>89%</b>	<b>91%</b>	<b>94%</b>	<b>93%</b>	
	Small Rural Jurisdiction Average	88%	89%	89%	89%	91%	
	Partnership Average	88%	88%	89%	89%	90%	
5. I am clear on the behaviour expected of students in my school.	Partnership High	95%	95%	96%	95%	95%	
	Partnership Low	90%	91%	88%	89%	92%	
	<b>Jurisdiction Result</b>	<b>93%</b>	<b>95%</b>	<b>96%</b>	<b>95%</b>	<b>95%</b>	
	Small Rural Jurisdiction Average	93%	94%	93%	93%	93%	
	Partnership Average	94%	94%	94%	93%	94%	

**Student Survey: Percentage Who Strongly Agree or Agree With Statement**

Vertical lines: Partnership High / Low  
Horizontal Line: Your Jurisdiction's Result

		2004	2005	2006	2007	2008	
<b>6. I am encouraged to do my best at school.</b>	Partnership High	92%	94%	92%	95%	95%	
	Partnership Low	88%	88%	88%	88%	88%	
	<b>Jurisdiction Result</b>	<b>90%</b>	<b>93%</b>	<b>92%</b>	<b>95%</b>	<b>93%</b>	
	Small Rural Jurisdiction Average	92%	92%	92%	92%	93%	
	Partnership Average	91%	90%	91%	91%	92%	
<b>7. Teachers use a variety of approaches to help me learn.</b>	Partnership High	86%	86%	85%	86%	85%	
	Partnership Low	77%	75%	77%	75%	76%	
	<b>Jurisdiction Result</b>	<b>78%</b>	<b>81%</b>	<b>81%</b>	<b>85%</b>	<b>85%</b>	
	Small Rural Jurisdiction Average	81%	82%	81%	82%	83%	
	Partnership Average	81%	80%	81%	81%	83%	
<b>8. In my class we do many different learning activities.</b>	Partnership High	85%	85%	82%	81%	85%	
	Partnership Low	76%	75%	75%	75%	75%	
	<b>Jurisdiction Result</b>	<b>81%</b>	<b>81%</b>	<b>79%</b>	<b>81%</b>	<b>85%</b>	
	Small Rural Jurisdiction Average	81%	81%	80%	80%	81%	
	Partnership Average	81%	79%	79%	79%	80%	
<b>9. My school offers many activities outside of the classroom.</b>	Partnership High	86%	85%	83%	79%	81%	
	Partnership Low	70%	70%	65%	67%	68%	
	<b>Jurisdiction Result</b>	<b>72%</b>	<b>72%</b>	<b>77%</b>	<b>72%</b>	<b>74%</b>	
	Small Rural Jurisdiction Average	74%	74%	75%	73%	76%	
	Partnership Average	79%	77%	78%	75%	77%	
<b>10. The learning activities given to me are interesting and meaningful.</b>	Partnership High	80%	79%	81%	83%	82%	
	Partnership Low	71%	70%	71%	67%	69%	
	<b>Jurisdiction Result</b>	<b>74%</b>	<b>74%</b>	<b>73%</b>	<b>80%</b>	<b>76%</b>	
	Small Rural Jurisdiction Average	76%	76%	76%	78%	78%	
	Partnership Average	75%	74%	75%	75%	78%	

**Student Survey: Percentage Who Strongly Agree or Agree With Statement**

Vertical lines: Partnership High / Low  
Horizontal Line: Your Jurisdiction's Result

		2004	2005	2006	2007	2008	
<b>11. The technology at school helps me learn.</b>	Partnership High	89%	90%	91%	86%	88%	
	Partnership Low	76%	77%	75%	73%	80%	
	<b>Jurisdiction Result</b>	<b>87%</b>	<b>87%</b>	<b>86%</b>	<b>86%</b>	<b>88%</b>	
	Small Rural Jurisdiction Average	83%	83%	81%	83%	86%	
	Partnership Average	83%	82%	82%	81%	83%	
<b>12. The school is teaching me the technology skills I need to know.</b>	Partnership High	86%	86%	86%	84%	84%	
	Partnership Low	73%	74%	71%	71%	73%	
	<b>Jurisdiction Result</b>	<b>79%</b>	<b>80%</b>	<b>78%</b>	<b>80%</b>	<b>83%</b>	
	Small Rural Jurisdiction Average	80%	80%	78%	81%	81%	
	Partnership Average	80%	78%	77%	76%	77%	
<b>13. My school recognizes me when I do well.</b>	Partnership High	77%	81%	82%	83%	83%	
	Partnership Low	72%	68%	70%	69%	70%	
	<b>Jurisdiction Result</b>	<b>74%</b>	<b>77%</b>	<b>77%</b>	<b>76%</b>	<b>75%</b>	
	Small Rural Jurisdiction Average	74%	74%	74%	74%	76%	
	Partnership Average	74%	73%	74%	73%	76%	
<b>14. I feel safe at school.</b>	Partnership High	89%	91%	89%	89%	91%	
	Partnership Low	80%	83%	81%	78%	82%	
	<b>Jurisdiction Result</b>	<b>86%</b>	<b>89%</b>	<b>88%</b>	<b>89%</b>	<b>91%</b>	
	Small Rural Jurisdiction Average	85%	88%	87%	87%	89%	
	Partnership Average	85%	85%	85%	85%	87%	
<b>15. Teachers provide the help and support I need to learn.</b>	Partnership High	92%	92%	93%	92%	94%	
	Partnership Low	87%	86%	84%	86%	86%	
	<b>Jurisdiction Result</b>	<b>87%</b>	<b>92%</b>	<b>91%</b>	<b>92%</b>	<b>92%</b>	
	Small Rural Jurisdiction Average	89%	90%	90%	90%	91%	
	Partnership Average	89%	89%	89%	89%	90%	

**Student Survey: Percentage Who Strongly Agree or Agree With Statement**

Vertical lines: Partnership High / Low  
Horizontal Line: Your Jurisdiction's Result

		2004	2005	2006	2007	2008	
<b>16. My school promotes physical activity, health and wellness.</b>	Partnership High	94%	93%	94%	96%	95%	
	Partnership Low	87%	86%	86%	87%	88%	
	<b>Jurisdiction Result</b>	<b>90%</b>	<b>91%</b>	<b>94%</b>	<b>94%</b>	<b>95%</b>	
	Small Rural Jurisdiction Average	90%	90%	91%	92%	91%	
	Partnership Average	90%	90%	91%	91%	91%	
<b>17. I am satisfied with the overall quality of education I receive in this school.</b>	Partnership High	93%	92%	91%	93%	92%	
	Partnership Low	84%	86%	84%	80%	82%	
	<b>Jurisdiction Result</b>	<b>85%</b>	<b>90%</b>	<b>88%</b>	<b>90%</b>	<b>89%</b>	
	Small Rural Jurisdiction Average	89%	90%	89%	90%	89%	
	Partnership Average	88%	88%	88%	87%	88%	
<b>18. I have sufficient opportunities to be involved in decisions that affect student life (gr. 10/12 only).</b>	Partnership High	77%	78%	74%	75%	80%	
	Partnership Low	56%	58%	61%	60%	67%	
	<b>Jurisdiction Result</b>	<b>75%</b>	<b>77%</b>	<b>73%</b>	<b>71%</b>	<b>72%</b>	
	Small Rural Jurisdiction Average	67%	72%	72%	68%	72%	
	Partnership Average	67%	69%	70%	67%	71%	
<b>19. I am satisfied with the variety of courses available in my school (gr. 10/12 only).</b>	Partnership High	88%	85%	86%	72%	71%	
	Partnership Low	39%	40%	46%	37%	44%	
	<b>Jurisdiction Result</b>	<b>53%</b>	<b>57%</b>	<b>58%</b>	<b>60%</b>	<b>60%</b>	
	Small Rural Jurisdiction Average	61%	57%	61%	50%	53%	
	See Note 1 Partnership Average	71%	71%	73%	62%	65%	
<b>20. I know how to access information regarding university and other post-secondary education (gr. 10/12 only).</b>	Partnership High	86%	89%	88%	87%	89%	
	Partnership Low	66%	62%	68%	74%	74%	
	<b>Jurisdiction Result</b>	<b>82%</b>	<b>89%</b>	<b>88%</b>	<b>87%</b>	<b>89%</b>	
	Small Rural Jurisdiction Average	76%	78%	79%	78%	79%	
	Partnership Average	76%	74%	76%	78%	79%	

Note 1: Changes in the number of urban and rural partners in 2007 compared to previous years likely impacted the Partnership results for this question.

**Student Survey: Percentage Who Strongly Agree or Agree With Statement**

Vertical lines: Partnership High / Low  
Horizontal Line: Your Jurisdiction's Result

		2004	2005	2006	2007	2008	
<b>21. There are sufficient resources available at school to help me make career decisions (gr. 10/12 only).</b>	<i>Partnership High</i>	81%	81%	84%	85%	91%	
	<i>Partnership Low</i>	61%	62%	65%	64%	70%	
	<b>Jurisdiction Result</b>	<b>75%</b>	<b>81%</b>	<b>84%</b>	<b>85%</b>	<b>91%</b>	
	<i>Small Rural Jurisdiction Average</i>	74%	73%	77%	72%	75%	
	<i>Partnership Average</i>	77%	75%	77%	74%	75%	
<b>22. I am learning the skills I will need when I leave school (gr. 10/12 only).</b>	<i>Partnership High</i>	83%	84%	85%	83%	85%	
	<i>Partnership Low</i>	62%	64%	70%	66%	73%	
	<b>Jurisdiction Result</b>	<b>83%</b>	<b>82%</b>	<b>81%</b>	<b>83%</b>	<b>82%</b>	
	<i>Small Rural Jurisdiction Average</i>	75%	76%	78%	74%	78%	
	<i>Partnership Average</i>	77%	76%	78%	76%	78%	
<b>23. I am proud of my school (gr. 10/12 only).</b>	<i>Partnership High</i>	89%	86%	87%	87%	89%	
	<i>Partnership Low</i>	66%	68%	67%	63%	70%	
	<b>Jurisdiction Result</b>	<b>81%</b>	<b>80%</b>	<b>84%</b>	<b>77%</b>	<b>87%</b>	
	<i>Small Rural Jurisdiction Average</i>	78%	79%	81%	74%	80%	
	<i>Partnership Average</i>	77%	77%	78%	77%	80%	

## Student Survey: Number of Surveys Returned by Jurisdiction by Year

	2007/08		2006/07		2005/06		2004/05		2003/04	
	Count	%	Count	%	Count	%	Count	%	Count	%
Chinook's Edge School Division No. 73	4316	32%	4397	33%	4236	16%	4241	16%	4153	15%
Christ The Redeemer Catholic Separate Regional Div. No.	2089	16%	2120	16%	1999	7%	1839	7%	1643	6%
East Central Alberta Catholic Separate School Div. No. 16	609	5%	596	4%	653	2%	654	3%	671	2%
Evergreen Catholic Separate Regional Division No. 2	1371	10%	1227	9%	1233	5%	978	4%	944	3%
Northern Gateway Public Schools	2140	16%	2106	16%						
Peace River School Division No. 10	1280	10%	1310	10%						
Prairie Land Regional Division No. 25	607	5%	626	5%	654	2%	655	3%	648	2%
St. Thomas Aquinas Roman Catholic Schools	958	7%	976	7%	972	4%	905	3%	957	3%
Clearview School Division No. 71					1007	4%	1006	4%	1062	4%
Golden Hills School Division No. 75					2451	9%	2515	10%	2484	9%
Medicine Hat Catholic Board of Education					1129	4%	1098	4%	1002	4%
Medicine Hat School District No. 76									2494	9%
Red Deer Catholic Regional Division No. 39					2344	9%	2083	8%	2094	8%
Red Deer Public School District No. 104					4207	16%	4139	16%	3523	13%
Wetaskiwin Regional Division No. 11					1533	6%	1674	6%	1643	6%
Wild Rose School Division No. 66					1991	7%	1994	8%	2016	7%
Wolf Creek School Division No. 72					2297	9%	2310	9%	2424	9%
Partnership	13370	100%	13358	100%	26706	100%	26091	100%	27758	100%

## Student Survey: Number of Surveys Returned by School, Grade, and Year

	2007/08						School Total	2006/07	2005/06	2004/05	2003/04
	Grade										
	4	5	6	8	10	12					
Altario	5	8	3		2	1	19	29	17	32	23
Berry Creek	4	8	7	5	1	5	30	38	31	43	29
Consort	16	11	15	23	32	25	122	103	120	129	120
Delia	10	7	11	14	9	10	61	64	57	72	65
J.C. Charyk	41	32	45	40	31	31	220	235	264	214	245
Morrin	16	20	11	15	13	13	88	92	90	93	98
Veteran	4	5	13	7			29	26	33	21	34
Youngstown	2	6	5	9	8	4	34	39	39	48	34
Hanna Outreach	2			1	1		4		3	3	
Jurisdiction Total	100	97	110	114	97	89	607	626	654	655	648

		2007/08	2006/07	2005/06	2004/05	2003/04
1. I feel welcome at school.	Agree	94%	94%	93%	94%	91%
	Disagree	6%	6%	7%	6%	9%
2. I am clear on what I am expected to learn.	Agree	95%	95%	94%	93%	90%
	Disagree	5%	5%	6%	7%	10%
3. I feel other students in school care about me.	Agree	83%	81%	80%	80%	77%
	Disagree	17%	19%	20%	20%	23%
4. The staff at my school care about their students.	Agree	93%	94%	91%	89%	88%
	Disagree	7%	6%	9%	11%	12%
5. I am clear on what behaviour is expected of students in my school.	Agree	95%	95%	96%	95%	93%
	Disagree	5%	5%	4%	5%	7%
6. I am encouraged to do my best at school.	Agree	93%	95%	92%	93%	90%
	Disagree	7%	5%	8%	7%	10%
7. Teachers use a variety of approaches to help me learn.	Agree	85%	85%	81%	81%	78%
	Disagree	15%	15%	19%	19%	22%
8. In my class we do many different learning activities.	Agree	85%	81%	79%	81%	81%
	Disagree	15%	19%	21%	19%	19%
9. My school offers many activities outside of the classroom.	Agree	74%	72%	77%	72%	72%
	Disagree	26%	28%	23%	28%	28%
10. The learning activities given to me are interesting and meaningful.	Agree	76%	80%	73%	74%	74%
	Disagree	24%	20%	27%	26%	26%
11. The technology at school helps me learn.	Agree	88%	86%	86%	87%	87%
	Disagree	12%	14%	14%	13%	13%
12. The school is teaching me the technology skills I need to know.	Agree	83%	80%	78%	80%	79%
	Disagree	17%	20%	22%	20%	21%
13. My school recognizes me when I do well.	Agree	75%	76%	77%	77%	74%
	Disagree	25%	24%	23%	23%	26%
14. I feel safe at school.	Agree	91%	89%	88%	89%	86%
	Disagree	9%	11%	13%	11%	14%
15. Teachers provide the help and support I need to learn.	Agree	92%	92%	91%	92%	87%
	Disagree	8%	8%	9%	8%	13%
16. My school promotes physical activity, health and wellness.	Agree	95%	94%	94%	91%	90%
	Disagree	5%	6%	6%	9%	10%
17. I am satisfied with the overall quality of education I receive in this school.	Agree	89%	90%	88%	90%	85%
	Disagree	11%	10%	12%	10%	15%
18. I have sufficient opportunities to be involved in decisions that affect student life (gr 10/12 only).	Agree	72%	71%	73%	77%	75%
	Disagree	28%	29%	27%	23%	25%
19. I am satisfied with the variety of courses available in my school (gr 10/12 only).	Agree	60%	60%	58%	57%	53%
	Disagree	40%	40%	42%	43%	47%
20. I know how to access information regarding university and other post-secondary education (gr 10/12)	Agree	89%	87%	88%	89%	82%
	Disagree	11%	13%	12%	11%	18%
21. There are sufficient resources available at school to help me make career decisions (gr 10/12 only).	Agree	91%	85%	84%	81%	75%
	Disagree	9%	15%	16%	19%	25%
22. I am learning the skills I will need when I leave school (gr 10/12 only).	Agree	82%	83%	81%	82%	83%
	Disagree	18%	17%	19%	18%	17%
23. I am proud of my school (gr 10/12 only).	Agree	87%	77%	84%	80%	81%
	Disagree	13%	23%	16%	20%	19%
J 1. I am satisfied with the way students behave at school.	Agree	64%	66%	65%	68%	65%
	Disagree	36%	34%	35%	32%	35%
J 2. I am satisfied with the kinds of courses offered at my school.	Agree	78%	76%	76%	75%	71%
	Disagree	22%	24%	24%	25%	29%
J 3. I am satisfied with the kinds of services (e.g. counseling, library, other) offered at my school.	Agree	92%	90%	89%	91%	89%
	Disagree	8%	10%	11%	9%	11%
J 4. My school bus driver is a safe driver (answer only if you use the school bus).	Agree	88%	90%	86%	86%	88%
	Disagree	12%	10%	14%	14%	12%
J 5. My school is well maintained.	Agree	86%	87%	88%	91%	
	Disagree	14%	13%	12%	9%	

## Student Survey: Partnership Results by Year

		2007/08	2006/07	2005/06	2004/05	2003/04
1. I feel welcome at school.	Agree	93%	91%	92%	91%	92%
	Disagree	7%	9%	8%	9%	8%
2. I am clear on what I am expected to learn.	Agree	93%	92%	92%	92%	92%
	Disagree	7%	8%	8%	8%	8%
3. I feel other students in school care about me.	Agree	79%	77%	77%	76%	76%
	Disagree	21%	23%	23%	24%	24%
4. The staff at my school care about their students.	Agree	90%	89%	89%	88%	88%
	Disagree	10%	11%	11%	12%	12%
5. I am clear on what behaviour is expected of students in my school.	Agree	94%	93%	94%	94%	94%
	Disagree	6%	7%	6%	6%	6%
6. I am encouraged to do my best at school.	Agree	92%	91%	91%	90%	91%
	Disagree	8%	9%	9%	10%	9%
7. Teachers use a variety of approaches to help me learn.	Agree	83%	81%	81%	80%	81%
	Disagree	17%	19%	19%	20%	19%
8. In my class we do many different learning activities.	Agree	80%	79%	79%	79%	81%
	Disagree	20%	21%	21%	21%	19%
9. My school offers many activities outside of the classroom.	Agree	77%	75%	78%	77%	79%
	Disagree	23%	25%	22%	23%	21%
10. The learning activities given to me are interesting and meaningful.	Agree	78%	75%	75%	74%	75%
	Disagree	22%	25%	25%	26%	25%
11. The technology at school helps me learn.	Agree	83%	81%	82%	82%	83%
	Disagree	17%	19%	18%	18%	17%
12. The school is teaching me the technology skills I need to know.	Agree	77%	76%	77%	78%	80%
	Disagree	23%	24%	23%	22%	20%
13. My school recognizes me when I do well.	Agree	76%	73%	74%	73%	74%
	Disagree	24%	27%	26%	27%	26%
14. I feel safe at school.	Agree	87%	85%	85%	85%	85%
	Disagree	13%	15%	15%	15%	15%
15. Teachers provide the help and support I need to learn.	Agree	90%	89%	89%	89%	89%
	Disagree	10%	11%	11%	11%	11%
16. My school promotes physical activity, health and wellness.	Agree	91%	91%	91%	90%	90%
	Disagree	9%	9%	9%	10%	10%
17. I am satisfied with the overall quality of education I receive in this school.	Agree	88%	87%	88%	88%	88%
	Disagree	12%	13%	12%	12%	12%
18. I have sufficient opportunities to be involved in decisions that affect student life (gr 10/12 only).	Agree	71%	67%	70%	69%	67%
	Disagree	29%	33%	30%	31%	33%
19. I am satisfied with the variety of courses available in my school (gr 10/12 only).	Agree	65%	62%	73%	71%	71%
	Disagree	35%	38%	27%	29%	29%
20. I know how to access information regarding university and other post-secondary education (gr 10/12 only).	Agree	79%	78%	76%	74%	76%
	Disagree	21%	22%	24%	26%	24%
21. There are sufficient resources available at school to help me make career decisions (gr 10/12 only).	Agree	75%	74%	77%	75%	77%
	Disagree	25%	26%	23%	25%	23%
22. I am learning the skills I will need when I leave school (gr 10/12 only).	Agree	78%	76%	78%	76%	77%
	Disagree	22%	24%	22%	24%	23%
23. I am proud of my school (gr 10/12 only).	Agree	80%	77%	78%	77%	77%
	Disagree	20%	23%	22%	23%	23%

## Student Survey: Comparative Results for This Year

		Prairie Land Regional Division	Small Rural Partners	Partnership
1. I feel welcome at school.	Agree	94%	92%	93%
	Disagree	6%	8%	7%
2. I am clear on what I am expected to learn.	Agree	95%	92%	93%
	Disagree	5%	8%	7%
3. I feel other students in school care about me.	Agree	83%	81%	79%
	Disagree	17%	19%	21%
4. The staff at my school care about their students.	Agree	93%	91%	90%
	Disagree	7%	9%	10%
5. I am clear on what behaviour is expected of students in my school.	Agree	95%	93%	94%
	Disagree	5%	7%	6%
6. I am encouraged to do my best at school.	Agree	93%	93%	92%
	Disagree	7%	7%	8%
7. Teachers use a variety of approaches to help me learn.	Agree	85%	83%	83%
	Disagree	15%	17%	17%
8. In my class we do many different learning activities.	Agree	85%	81%	80%
	Disagree	15%	19%	20%
9. My school offers many activities outside of the classroom.	Agree	74%	76%	77%
	Disagree	26%	24%	23%
10. The learning activities given to me are interesting and meaningful.	Agree	76%	78%	78%
	Disagree	24%	22%	22%
11. The technology at school helps me learn.	Agree	88%	86%	83%
	Disagree	12%	14%	17%
12. The school is teaching me the technology skills I need to know.	Agree	83%	81%	77%
	Disagree	17%	19%	23%
13. My school recognizes me when I do well.	Agree	75%	76%	76%
	Disagree	25%	24%	24%
14. I feel safe at school.	Agree	91%	89%	87%
	Disagree	9%	11%	13%
15. Teachers provide the help and support I need to learn.	Agree	92%	91%	90%
	Disagree	8%	9%	10%
16. My school promotes physical activity, health and wellness.	Agree	95%	91%	91%
	Disagree	5%	9%	9%
17. I am satisfied with the overall quality of education I receive in this school.	Agree	89%	89%	88%
	Disagree	11%	11%	12%
18. I have sufficient opportunities to be involved in decisions that affect student life (gr 10/12 only).	Agree	72%	72%	71%
	Disagree	28%	28%	29%
19. I am satisfied with the variety of courses available in my school (gr 10/12 only).	Agree	60%	53%	65%
	Disagree	40%	47%	35%
20. I know how to access information regarding university and other post-secondary education (gr 10/12 only).	Agree	89%	79%	79%
	Disagree	11%	21%	21%
21. There are sufficient resources available at school to help me make career decisions (gr 10/12 only).	Agree	91%	75%	75%
	Disagree	9%	25%	25%
22. I am learning the skills I will need when I leave school (gr 10/12 only).	Agree	82%	78%	78%
	Disagree	18%	22%	22%
23. I am proud of my school (gr 10/12 only).	Agree	87%	80%	80%
	Disagree	13%	20%	20%

		4	5	6	8	10	12
1. I feel welcome at school.	Agree	94%	95%	95%	91%	94%	94%
	Disagree	6%	5%	5%	9%	6%	6%
2. I am clear on what I am expected to learn.	Agree	96%	98%	96%	89%	94%	98%
	Disagree	4%	2%	4%	11%	6%	2%
3. I feel other students in school care about me.	Agree	81%	87%	80%	72%	86%	93%
	Disagree	19%	13%	20%	28%	14%	7%
4. The staff at my school care about their students.	Agree	97%	99%	93%	87%	92%	94%
	Disagree	3%	1%	7%	13%	8%	6%
5. I am clear on what behaviour is expected of students in my school.	Agree	95%	99%	96%	92%	96%	92%
	Disagree	5%	1%	4%	8%	4%	8%
6. I am encouraged to do my best at school.	Agree	99%	97%	94%	89%	89%	92%
	Disagree	1%	3%	6%	11%	11%	8%
7. Teachers use a variety of approaches to help me learn.	Agree	99%	96%	89%	68%	79%	81%
	Disagree	1%	4%	11%	32%	21%	19%
8. In my class we do many different learning activities.	Agree	96%	94%	95%	72%	79%	75%
	Disagree	4%	6%	5%	28%	21%	25%
9. My school offers many activities outside of the classroom.	Agree	79%	91%	80%	69%	64%	62%
	Disagree	21%	9%	20%	31%	36%	38%
10. The learning activities given to me are interesting and meaningful.	Agree	92%	90%	76%	62%	67%	69%
	Disagree	8%	10%	24%	38%	33%	31%
11. The technology at school helps me learn.	Agree	89%	91%	95%	78%	88%	91%
	Disagree	11%	9%	5%	22%	12%	9%
12. The school is teaching me the technology skills I need to know.	Agree	91%	90%	89%	72%	80%	78%
	Disagree	9%	10%	11%	28%	20%	22%
13. My school recognizes me when I do well.	Agree	74%	80%	75%	73%	66%	80%
	Disagree	26%	20%	25%	27%	34%	20%
14. I feel safe at school.	Agree	89%	91%	90%	87%	94%	98%
	Disagree	11%	9%	10%	13%	6%	2%
15. Teachers provide the help and support I need to learn.	Agree	98%	95%	94%	82%	91%	92%
	Disagree	2%	5%	6%	18%	9%	8%
16. My school promotes physical activity, health and wellness.	Agree	99%	98%	94%	94%	92%	93%
	Disagree	1%	2%	6%	6%	8%	7%
17. I am satisfied with the overall quality of education I receive in this school.	Agree	91%	98%	95%	77%	84%	90%
	Disagree	9%	2%	5%	23%	16%	10%
18. I have sufficient opportunities to be involved in decisions that affect student life (gr 10/12 only).	Agree					67%	78%
	Disagree					33%	22%
19. I am satisfied with the variety of courses available in my school (gr 10/12 only).	Agree					61%	59%
	Disagree					39%	41%
20. I know how to access information regarding university and other post-secondary education (gr 10/12 only).	Agree					85%	93%
	Disagree					15%	7%
21. There are sufficient resources available at school to help me make career decisions (gr 10/12 only).	Agree					91%	92%
	Disagree					9%	8%
22. I am learning the skills I will need when I leave school (gr 10/12 only).	Agree					83%	82%
	Disagree					17%	18%
23. I am proud of my school (gr 10/12 only).	Agree					90%	84%
	Disagree					10%	16%
J 1. I am satisfied with the way students behave at school.	Agree	64%	73%	65%	51%	61%	71%
	Disagree	36%	27%	35%	49%	39%	29%
J 2. I am satisfied with the kinds of courses offered at my school.	Agree	91%	96%	87%	71%	63%	64%
	Disagree	9%	4%	13%	29%	38%	36%
J 3. I am satisfied with the kinds of services (e.g. counseling, library, other) offered at my school.	Agree	97%	96%	93%	85%	87%	97%
	Disagree	3%	4%	7%	15%	13%	3%
J 4. My school bus driver is a safe driver (answer only if you use the school bus).	Agree	89%	89%	92%	85%	85%	88%
	Disagree	11%	11%	8%	15%	15%	13%
J 5. My school is well maintained.	Agree	96%	90%	87%	75%	86%	85%
	Disagree	4%	10%	13%	25%	14%	15%

Small Rural Partners

		4	5	6	8	10	12
1. I feel welcome at school.	Agree	93%	92%	92%	90%	92%	93%
	Disagree	7%	8%	8%	10%	8%	7%
2. I am clear on what I am expected to learn.	Agree	96%	94%	94%	87%	90%	93%
	Disagree	4%	6%	6%	13%	10%	7%
3. I feel other students in school care about me.	Agree	83%	81%	78%	77%	82%	86%
	Disagree	17%	19%	22%	23%	18%	14%
4. The staff at my school care about their students.	Agree	97%	94%	92%	83%	83%	93%
	Disagree	3%	6%	8%	17%	17%	7%
5. I am clear on what behaviour is expected of students in my school.	Agree	96%	94%	95%	91%	92%	93%
	Disagree	4%	6%	5%	9%	8%	7%
6. I am encouraged to do my best at school.	Agree	98%	95%	94%	89%	88%	89%
	Disagree	2%	5%	6%	11%	12%	11%
7. Teachers use a variety of approaches to help me learn.	Agree	97%	92%	88%	70%	67%	76%
	Disagree	3%	8%	12%	30%	33%	24%
8. In my class we do many different learning activities.	Agree	96%	91%	89%	66%	65%	71%
	Disagree	4%	9%	11%	34%	35%	29%
9. My school offers many activities outside of the classroom.	Agree	88%	85%	77%	69%	63%	66%
	Disagree	12%	15%	23%	31%	37%	34%
10. The learning activities given to me are interesting and meaningful.	Agree	93%	88%	85%	65%	63%	69%
	Disagree	7%	12%	15%	35%	37%	31%
11. The technology at school helps me learn.	Agree	93%	90%	90%	80%	80%	77%
	Disagree	7%	10%	10%	20%	20%	23%
12. The school is teaching me the technology skills I need to know.	Agree	92%	87%	84%	73%	74%	73%
	Disagree	8%	13%	16%	27%	26%	27%
13. My school recognizes me when I do well.	Agree	84%	79%	79%	69%	65%	76%
	Disagree	16%	21%	21%	31%	35%	24%
14. I feel safe at school.	Agree	90%	88%	89%	85%	90%	94%
	Disagree	10%	12%	11%	15%	10%	6%
15. Teachers provide the help and support I need to learn.	Agree	97%	94%	94%	82%	84%	91%
	Disagree	3%	6%	6%	18%	16%	9%
16. My school promotes physical activity, health and wellness.	Agree	97%	92%	91%	91%	85%	86%
	Disagree	3%	8%	9%	9%	15%	14%
17. I am satisfied with the overall quality of education I receive in this school.	Agree	93%	93%	94%	83%	82%	87%
	Disagree	7%	7%	6%	17%	18%	13%
18. I have sufficient opportunities to be involved in decisions that affect student life (gr 10/12 only).	Agree					70%	75%
	Disagree					30%	25%
19. I am satisfied with the variety of courses available in my school (gr 10/12 only).	Agree					52%	54%
	Disagree					48%	46%
20. I know how to access information regarding university and other post-secondary education (gr 10/12 only).	Agree					71%	88%
	Disagree					29%	12%
21. There are sufficient resources available at school to help me make career decisions (gr 10/12 only).	Agree					69%	82%
	Disagree					31%	18%
22. I am learning the skills I will need when I leave school (gr 10/12 only).	Agree					78%	77%
	Disagree					22%	23%
23. I am proud of my school (gr 10/12 only).	Agree					76%	84%
	Disagree					24%	16%
J 1. I am satisfied with the way students behave at school.	Agree						
	Disagree						
J 2. I am satisfied with the kinds of courses offered at my school.	Agree						
	Disagree						
J 3. I am satisfied with the kinds of services (e.g. counseling, library, other) offered at my school.	Agree						
	Disagree						
J 4. My school bus driver is a safe driver (answer only if you use the school bus).	Agree						
	Disagree						
J 5. My school is well maintained.	Agree						
	Disagree						

Partnership

		4	5	6	8	10	12
1. I feel welcome at school.	Agree	94%	93%	93%	89%	92%	94%
	Disagree	6%	7%	7%	11%	8%	6%
2. I am clear on what I am expected to learn.	Agree	96%	94%	94%	88%	91%	94%
	Disagree	4%	6%	6%	12%	9%	6%
3. I feel other students in school care about me.	Agree	83%	81%	80%	75%	78%	79%
	Disagree	17%	19%	20%	25%	22%	21%
4. The staff at my school care about their students.	Agree	98%	94%	92%	80%	85%	91%
	Disagree	2%	6%	8%	20%	15%	9%
5. I am clear on what behaviour is expected of students in my school.	Agree	96%	95%	96%	91%	93%	94%
	Disagree	4%	5%	4%	9%	7%	6%
6. I am encouraged to do my best at school.	Agree	97%	95%	95%	88%	88%	89%
	Disagree	3%	5%	5%	12%	12%	11%
7. Teachers use a variety of approaches to help me learn.	Agree	96%	92%	89%	69%	70%	75%
	Disagree	4%	8%	11%	31%	30%	25%
8. In my class we do many different learning activities.	Agree	96%	92%	89%	66%	67%	70%
	Disagree	4%	8%	11%	34%	33%	30%
9. My school offers many activities outside of the classroom.	Agree	87%	83%	81%	71%	70%	68%
	Disagree	13%	17%	19%	29%	30%	32%
10. The learning activities given to me are interesting and meaningful.	Agree	92%	88%	85%	64%	65%	69%
	Disagree	8%	12%	15%	36%	35%	31%
11. The technology at school helps me learn.	Agree	92%	89%	88%	75%	79%	75%
	Disagree	8%	11%	12%	25%	21%	25%
12. The school is teaching me the technology skills I need to know.	Agree	91%	85%	81%	68%	70%	66%
	Disagree	9%	15%	19%	32%	30%	34%
13. My school recognizes me when I do well.	Agree	83%	80%	78%	69%	68%	75%
	Disagree	17%	20%	22%	31%	32%	25%
14. I feel safe at school.	Agree	91%	87%	87%	81%	85%	91%
	Disagree	9%	13%	13%	19%	15%	9%
15. Teachers provide the help and support I need to learn.	Agree	97%	94%	94%	81%	86%	91%
	Disagree	3%	6%	6%	19%	14%	9%
16. My school promotes physical activity, health and wellness.	Agree	96%	93%	93%	89%	88%	85%
	Disagree	4%	7%	7%	11%	12%	15%
17. I am satisfied with the overall quality of education I receive in this school.	Agree	94%	92%	93%	80%	84%	86%
	Disagree	6%	8%	7%	20%	16%	14%
18. I have sufficient opportunities to be involved in decisions that affect student life (gr 10/12 only).	Agree					71%	72%
	Disagree					29%	28%
19. I am satisfied with the variety of courses available in my school (gr 10/12 only).	Agree					66%	64%
	Disagree					34%	36%
20. I know how to access information regarding university and other post-secondary education (gr 10/12 only).	Agree					72%	87%
	Disagree					28%	13%
21. There are sufficient resources available at school to help me make career decisions (gr 10/12 only).	Agree					73%	78%
	Disagree					27%	22%
22. I am learning the skills I will need when I leave school (gr 10/12 only).	Agree					78%	78%
	Disagree					22%	22%
23. I am proud of my school (gr 10/12 only).	Agree	93%	92%	91%	71%	74%	78%
	Disagree	7%	8%	9%	29%	26%	22%
J 1. I am satisfied with the way students behave at school.	Agree						
	Disagree						
J 2. I am satisfied with the kinds of courses offered at my school.	Agree						
	Disagree						
J 3. I am satisfied with the kinds of services (e.g. counseling, library, other) offered at my school.	Agree						
	Disagree						
J 4. My school bus driver is a safe driver (answer only if you use the school bus).	Agree						
	Disagree						
J 5. My school is well maintained.	Agree						
	Disagree						

**Parent Survey: Percentage Who Are Very Satisfied or Satisfied**

Vertical lines: Partnership High / Low  
Horizontal Line: Your Jurisdiction's Result

		2004	2005	2006	2007	2008	
<b>1. With the way you are welcomed when you visit the school?</b>	Partnership High	98%	96%	97%	97%	99%	
	Partnership Low	93%	90%	92%	93%	93%	
	<b>Jurisdiction Result</b>	<b>97%</b>	<b>92%</b>	<b>95%</b>	<b>96%</b>	<b>96%</b>	
	Small Rural Jurisdiction Average	95%	93%	94%	96%	96%	
	Partnership Average	96%	95%	95%	95%	95%	
<b>2. With the way the school keeps you informed about your child's progress and achievement?</b>	Partnership High	93%	90%	92%	94%	91%	
	Partnership Low	86%	85%	85%	81%	84%	
	<b>Jurisdiction Result</b>	<b>87%</b>	<b>85%</b>	<b>86%</b>	<b>91%</b>	<b>87%</b>	
	Small Rural Jurisdiction Average	90%	89%	90%	92%	90%	
	Partnership Average	89%	88%	89%	87%	88%	
<b>3. With the opportunities you have to be involved in school decision-making?</b>	Partnership High	93%	92%	93%	92%	92%	
	Partnership Low	85%	83%	82%	77%	81%	
	<b>Jurisdiction Result</b>	<b>85%</b>	<b>84%</b>	<b>82%</b>	<b>83%</b>	<b>81%</b>	
	Small Rural Jurisdiction Average	88%	87%	86%	89%	87%	
	Partnership Average	89%	88%	87%	85%	86%	
<b>4. With the opportunities the school offers for your involvement in school activities?</b>	Partnership High	96%	95%	96%	95%	94%	
	Partnership Low	90%	89%	86%	85%	88%	
	<b>Jurisdiction Result</b>	<b>91%</b>	<b>89%</b>	<b>91%</b>	<b>90%</b>	<b>91%</b>	
	Small Rural Jurisdiction Average	94%	92%	92%	93%	92%	
	Partnership Average	93%	93%	91%	91%	91%	
<b>5. With the opportunity for your child to learn about computers and other technologies at school?</b>	Partnership High	95%	95%	95%	95%	93%	
	Partnership Low	80%	82%	79%	78%	79%	
	<b>Jurisdiction Result</b>	<b>88%</b>	<b>90%</b>	<b>91%</b>	<b>93%</b>	<b>93%</b>	
	Small Rural Jurisdiction Average	88%	89%	87%	91%	91%	
	Partnership Average	90%	89%	89%	86%	87%	

**Parent Survey: Percentage Who Are Very Satisfied or Satisfied**

Vertical lines: Partnership High / Low  
Horizontal Line: Your Jurisdiction's Result

		2004	2005	2006	2007	2008	
<b>6. With the way discipline matters are dealt with by school staff?</b>	Partnership High	90%	88%	90%	88%	95%	
	Partnership Low	75%	75%	78%	65%	75%	
	<b>Jurisdiction Result</b>	<b>77%</b>	<b>75%</b>	<b>82%</b>	<b>80%</b>	<b>80%</b>	
	Small Rural Jurisdiction Average	81%	84%	84%	84%	86%	
	Partnership Average	84%	84%	84%	80%	83%	
<b>7. With the way the school recognizes student achievement?</b>	Partnership High	95%	94%	95%	95%	97%	
	Partnership Low	88%	89%	88%	88%	89%	
	<b>Jurisdiction Result</b>	<b>89%</b>	<b>89%</b>	<b>89%</b>	<b>90%</b>	<b>91%</b>	
	Small Rural Jurisdiction Average	91%	90%	91%	93%	92%	
	Partnership Average	92%	92%	91%	90%	91%	
<b>8. With the academic achievement of the students in this school?</b>	Partnership High	97%	97%	97%	95%	98%	
	Partnership Low	88%	90%	89%	78%	79%	
	<b>Jurisdiction Result</b>	<b>93%</b>	<b>93%</b>	<b>92%</b>	<b>93%</b>	<b>90%</b>	
	Small Rural Jurisdiction Average	94%	94%	94%	94%	94%	
	Partnership Average	93%	93%	93%	90%	90%	
<b>9. With the extra-curricular activities offered to students?</b>	Partnership High	92%	92%	92%	87%	88%	
	Partnership Low	79%	82%	80%	76%	79%	
	<b>Jurisdiction Result</b>	<b>86%</b>	<b>84%</b>	<b>84%</b>	<b>81%</b>	<b>80%</b>	
	Small Rural Jurisdiction Average	86%	87%	86%	85%	85%	
	Partnership Average	87%	86%	86%	83%	83%	
<b>10. With the communications you receive from the school? (e.g. notices, newsletters, telephone calls)</b>	Partnership High	95%	94%	94%	96%	95%	
	Partnership Low	88%	85%	84%	86%	88%	
	<b>Jurisdiction Result</b>	<b>89%</b>	<b>89%</b>	<b>88%</b>	<b>90%</b>	<b>88%</b>	
	Small Rural Jurisdiction Average	92%	92%	91%	93%	92%	
	Partnership Average	91%	91%	90%	90%	91%	

**Parent Survey: Percentage Who Are Very Satisfied or Satisfied**

Vertical lines: Partnership High / Low  
Horizontal Line: Your Jurisdiction's Result

		2004	2005	2006	2007	2008	
<b>11. With the help and support teachers give your child to help him / her learn?</b>	<i>Partnership High</i>	93%	93%	91%	94%	92%	
	<i>Partnership Low</i>	83%	82%	85%	77%	78%	
	<b>Jurisdiction Result</b>	<b>85%</b>	<b>82%</b>	<b>86%</b>	<b>87%</b>	<b>88%</b>	
	<i>Small Rural Jurisdiction Average</i>	89%	89%	90%	91%	91%	
	<i>Partnership Average</i>	87%	88%	88%	87%	88%	
<b>12. That the educational dollars are well spent in this school?</b>	<i>Partnership High</i>	95%	93%	94%	94%	96%	
	<i>Partnership Low</i>	78%	76%	79%	73%	80%	
	<b>Jurisdiction Result</b>	<b>78%</b>	<b>78%</b>	<b>79%</b>	<b>78%</b>	<b>81%</b>	
	<i>Small Rural Jurisdiction Average</i>	87%	88%	88%	88%	89%	
	<i>Partnership Average</i>	86%	86%	87%	85%	87%	
<b>13. That the School Council plays a meaningful role in the school?</b>	<i>Partnership High</i>	96%	97%	96%	92%	92%	
	<i>Partnership Low</i>	83%	85%	84%	80%	83%	
	<b>Jurisdiction Result</b>	<b>83%</b>	<b>85%</b>	<b>84%</b>	<b>83%</b>	<b>87%</b>	
	<i>Small Rural Jurisdiction Average</i>	90%	91%	90%	90%	90%	
	<i>Partnership Average</i>	91%	91%	90%	88%	89%	
<b>14. With the safety of the school environment?</b>	<i>Partnership High</i>	97%	95%	96%	94%	97%	
	<i>Partnership Low</i>	85%	87%	84%	82%	88%	
	<b>Jurisdiction Result</b>	<b>91%</b>	<b>89%</b>	<b>91%</b>	<b>91%</b>	<b>94%</b>	
	<i>Small Rural Jurisdiction Average</i>	90%	91%	93%	92%	93%	
	<i>Partnership Average</i>	90%	90%	90%	89%	91%	
<b>15. That there is a caring atmosphere at the school?</b>	<i>Partnership High</i>	96%	97%	97%	96%	99%	
	<i>Partnership Low</i>	84%	87%	86%	81%	86%	
	<b>Jurisdiction Result</b>	<b>89%</b>	<b>87%</b>	<b>91%</b>	<b>90%</b>	<b>88%</b>	
	<i>Small Rural Jurisdiction Average</i>	92%	93%	93%	94%	95%	
	<i>Partnership Average</i>	91%	91%	91%	90%	92%	

**Parent Survey: Percentage Who Are Very Satisfied or Satisfied**

Vertical lines: Partnership High / Low  
Horizontal Line: Your Jurisdiction's Result

		2004	2005	2006	2007	2008	
<b>16. That your child is learning the skills he / she will need when he / she leaves school?</b>	<i>Partnership High</i>	95%	95%	94%	96%	97%	
	<i>Partnership Low</i>	83%	88%	84%	76%	80%	
	<b>Jurisdiction Result</b>	<b>86%</b>	<b>88%</b>	<b>89%</b>	<b>89%</b>	<b>91%</b>	
	<i>Small Rural Jurisdiction Average</i>	90%	91%	91%	94%	93%	
	<i>Partnership Average</i>	90%	90%	90%	88%	89%	
<b>17. With the choice of programs available in the school system?</b>	<i>Partnership High</i>	93%	93%	94%	87%	90%	
	<i>Partnership Low</i>	80%	78%	78%	68%	74%	
	<b>Jurisdiction Result</b>	<b>80%</b>	<b>78%</b>	<b>78%</b>	<b>80%</b>	<b>82%</b>	
	<i>Small Rural Jurisdiction Average</i>	85%	85%	84%	85%	86%	
	<i>Partnership Average</i>	88%	87%	85%	82%	84%	
<b>18. That the school promotes physical activity, health and wellness?</b>	<i>Partnership High</i>	97%	95%	97%	98%	97%	
	<i>Partnership Low</i>	88%	90%	90%	87%	90%	
	<b>Jurisdiction Result</b>	<b>93%</b>	<b>93%</b>	<b>94%</b>	<b>95%</b>	<b>97%</b>	
	<i>Small Rural Jurisdiction Average</i>	93%	92%	94%	94%	95%	
	<i>Partnership Average</i>	93%	93%	94%	92%	93%	
<b>19. With the overall quality of education your child receives?</b>	<i>Partnership High</i>	97%	97%	96%	98%	97%	
	<i>Partnership Low</i>	88%	90%	89%	80%	84%	
	<b>Jurisdiction Result</b>	<b>92%</b>	<b>93%</b>	<b>91%</b>	<b>93%</b>	<b>92%</b>	
	<i>Small Rural Jurisdiction Average</i>	94%	95%	94%	96%	95%	
	<i>Partnership Average</i>	93%	93%	93%	91%	92%	
<b>20. That the school has a process for improving the quality of education it offers to students?</b>	<i>Partnership High</i>	95%	94%	93%	94%	94%	
	<i>Partnership Low</i>	83%	85%	83%	76%	78%	
	<b>Jurisdiction Result</b>	<b>86%</b>	<b>85%</b>	<b>83%</b>	<b>84%</b>	<b>84%</b>	
	<i>Small Rural Jurisdiction Average</i>	91%	89%	90%	90%	90%	
	<i>Partnership Average</i>	89%	89%	89%	87%	88%	

**Parent Survey: Percentage Who Are Very Satisfied or Satisfied**

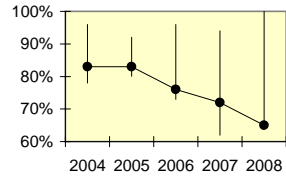
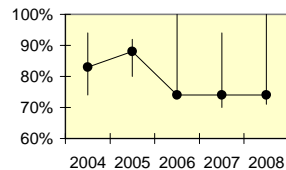
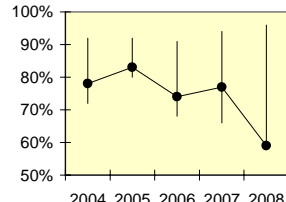
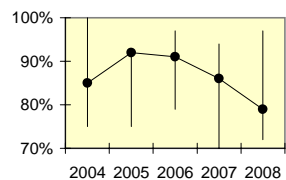
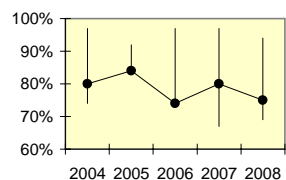
Vertical lines: Partnership High / Low  
Horizontal Line: Your Jurisdiction's Result

		2004	2005	2006	2007	2008	
<b>21. That the school bus is a safe place for your child? [If your child regularly rides bus to / from school]</b>	<i>Partnership High</i>	92%	95%	92%	95%	93%	
	<i>Partnership Low</i>	70%	80%	81%	77%	78%	
	<b>Jurisdiction Result</b>	<b>90%</b>	<b>92%</b>	<b>89%</b>	<b>95%</b>	<b>93%</b>	
	<i>Small Rural Jurisdiction Average</i>	84%	87%	88%	84%	83%	
	<i>Partnership Average</i>	85%	87%	87%	84%	86%	
<b>22. With the overall performance of school bus transportation? (time / distance to school) [If your child regularly rides bus]</b>	<i>Partnership High</i>	94%	90%	93%	91%	88%	
	<i>Partnership Low</i>	74%	74%	78%	75%	75%	
	<b>Jurisdiction Result</b>	<b>87%</b>	<b>87%</b>	<b>86%</b>	<b>91%</b>	<b>88%</b>	
	<i>Small Rural Jurisdiction Average</i>	84%	82%	83%	81%	80%	
	<i>Partnership Average</i>	83%	83%	84%	81%	84%	

Vertical lines: Partnership High / Low  
Horizontal Line: Your Jurisdiction's Result

**Parent Survey: Percentage Who Are Very Satisfied or Satisfied**

		2004	2005	2006	2007	2008
<b>A. That your child has access to an appropriate service or program?</b>	Partnership High	97%	92%	97%	97%	94%
	Partnership Low	74%	84%	74%	67%	69%
	<b>Jurisdiction Result</b>	<b>80%</b>	<b>84%</b>	<b>74%</b>	<b>80%</b>	<b>75%</b>
	Small Rural Jurisdiction Average	84%	87%	85%	84%	84%
	Partnership Average	86%	87%	86%	80%	83%
<b>B. That you were involved in the development of your child's Individual Program Plan (IPP)?</b>	Partnership High	100%	92%	97%	94%	97%
	Partnership Low	75%	75%	79%	70%	72%
	<b>Jurisdiction Result</b>	<b>85%</b>	<b>92%</b>	<b>91%</b>	<b>86%</b>	<b>79%</b>
	Small Rural Jurisdiction Average	85%	90%	87%	88%	87%
	Partnership Average	83%	84%	85%	82%	86%
<b>C. That your school effectively coordinates the involvement of other agencies or specialists in providing the above services / programs?</b>	Partnership High	92%	92%	91%	94%	96%
	Partnership Low	72%	80%	68%	66%	59%
	<b>Jurisdiction Result</b>	<b>78%</b>	<b>83%</b>	<b>74%</b>	<b>77%</b>	<b>59%</b>
	Small Rural Jurisdiction Average	79%	86%	79%	82%	80%
	Partnership Average	82%	85%	81%	78%	81%
<b>D. With your child's overall progress in the programs provided?</b>	Partnership High	94%	92%	100%	94%	100%
	Partnership Low	74%	80%	74%	70%	71%
	<b>Jurisdiction Result</b>	<b>83%</b>	<b>88%</b>	<b>74%</b>	<b>74%</b>	<b>74%</b>
	Small Rural Jurisdiction Average	84%	89%	84%	87%	86%
	Partnership Average	86%	87%	84%	84%	83%
<b>E. With the quality of the services / programs overall?</b>	Partnership High	96%	92%	96%	94%	100%
	Partnership Low	78%	80%	73%	62%	65%
	<b>Jurisdiction Result</b>	<b>83%</b>	<b>83%</b>	<b>76%</b>	<b>72%</b>	<b>65%</b>
	Small Rural Jurisdiction Average	84%	86%	82%	84%	84%
	Partnership Average	86%	85%	84%	81%	83%



## Parent Survey: Number of Surveys Returned by Jurisdiction by Year

	2007/08		2006/07		2005/06		2004/05		2003/04	
	Count	%	Count	%	Count	%	Count	%	Count	%
Chinook's Edge School Division No. 73	1479	30%	1597	31%	1400	14%	1469	14%	1437	12%
Christ The Redeemer Catholic Separate Regional Div. No. 3	667	14%	705	14%	617	6%	635	6%	601	5%
East Central Alberta Catholic Separate School Div. No. 16	267	5%	349	7%	371	4%	316	3%	350	3%
Evergreen Catholic Separate Regional Division No. 2	369	7%	398	8%	340	4%	335	3%	386	3%
Northern Gateway Public Schools	903	18%	882	17%						
Peace River School Division No. 10	562	11%	561	11%						
Prairie Land Regional Division No. 25	304	6%	330	6%	351	4%	394	4%	583	5%
St. Thomas Aquinas Roman Catholic Schools	382	8%	380	7%	366	4%	318	3%	367	3%
Clearview School Division No. 71					400	4%	401	4%	410	4%
Golden Hills School Division No. 75					751	8%	976	10%	1072	9%
Medicine Hat Catholic Board of Education					388	4%	384	4%	412	4%
Medicine Hat School District No. 76									919	8%
Red Deer Catholic Regional Division No. 39					736	8%	759	7%	808	7%
Red Deer Public School District No. 104					1532	16%	1585	16%	1447	13%
Wetaskiwin Regional Division No. 11					609	6%	646	6%	686	6%
Wild Rose School Division No. 66					702	7%	869	9%	848	7%
Wolf Creek School Division No. 72					1102	11%	1082	11%	1174	10%
Partnership	4933	100%	5202	100%	9665	100%	10169	100%	11500	100%

## Parent Survey: Number of Surveys Returned by School and Year

	2007/08	2006/07	2005/06	2004/05	2003/04
Altario	14	19	22	20	44
Berry Creek	13	20	15	26	24
Consort	60	66	62	69	84
Delia	31	36	38	43	64
Hanna Primary	54	68	60	58	96
J.C. Charyk	53	40	67	71	113
Morrin	33	34	41	51	72
Veteran	17	18	21	20	39
Youngstown	24	26	19	30	44
Hanna Outreach			2	2	
School not indicated	5	3	4	4	3
Jurisdiction Total	304	330	351	394	583

Note: The number of parent surveys returned in 2004/05 is significantly lower than in the previous year because one survey was distributed per household in 2004/05 whereas one survey per student was distributed in the previous year.

## Parent Survey: Jurisdiction Results by Year

		2007/08	2006/07	2005/06	2004/05	2003/04
1. With the way you are welcomed when you visit the school?	Satisfied	96%	96%	95%	92%	97%
	Dissatisfied	4%	4%	5%	8%	3%
2. With the way the school keeps you informed about your child's progress and achievement?	Satisfied	87%	91%	86%	85%	87%
	Dissatisfied	13%	9%	14%	15%	13%
3. With the opportunities you have to be involved in school decision-making?	Satisfied	81%	83%	82%	84%	85%
	Dissatisfied	19%	17%	18%	16%	15%
4. With the opportunities the school offers for your involvement in school activities?	Satisfied	91%	90%	91%	89%	91%
	Dissatisfied	9%	10%	9%	11%	9%
5. With the opportunity for your child to learn about computers and other technologies at school?	Satisfied	93%	93%	91%	90%	88%
	Dissatisfied	7%	7%	9%	10%	12%
6. With the way discipline matters are dealt with by school staff?	Satisfied	80%	80%	82%	75%	77%
	Dissatisfied	20%	20%	18%	25%	23%
7. With the way the school recognizes student achievement?	Satisfied	91%	90%	89%	89%	89%
	Dissatisfied	9%	10%	11%	11%	11%
8. With the academic achievement of the students in this school?	Satisfied	90%	93%	92%	93%	93%
	Dissatisfied	10%	7%	8%	7%	7%
9. With the extra-curricular activities offered to students?	Satisfied	80%	81%	84%	84%	86%
	Dissatisfied	20%	19%	16%	16%	14%
10. With the communications you receive from the school? (e.g. notices, newsletters, telephone calls)	Satisfied	88%	90%	88%	89%	89%
	Dissatisfied	12%	10%	12%	11%	11%
11. With the help and support teachers give your child to help him / her learn?	Satisfied	88%	87%	86%	82%	85%
	Dissatisfied	12%	13%	14%	18%	15%
12. That educational dollars are well spent in this school?	Satisfied	81%	78%	79%	78%	78%
	Dissatisfied	19%	22%	21%	22%	22%
13. That the School Council plays a meaningful role in the school?	Satisfied	87%	83%	84%	85%	83%
	Dissatisfied	13%	17%	16%	15%	17%
14. With the safety of the school environment?	Satisfied	94%	91%	91%	89%	91%
	Dissatisfied	6%	9%	9%	11%	9%
15. That there is a caring atmosphere at the school?	Satisfied	88%	90%	91%	87%	89%
	Dissatisfied	12%	10%	9%	13%	11%
16. That your child is learning the skills he / she will need when he / she leaves school?	Satisfied	91%	89%	89%	88%	86%
	Dissatisfied	9%	11%	11%	12%	14%
17. With the choice of programs available in the school system?	Satisfied	82%	80%	78%	78%	80%
	Dissatisfied	18%	20%	22%	22%	20%
18. That the school promotes physical activity, health and wellness?	Satisfied	97%	95%	94%	93%	93%
	Dissatisfied	3%	5%	6%	7%	7%
19. With the overall quality of education your child receives?	Satisfied	92%	93%	91%	93%	92%
	Dissatisfied	8%	7%	9%	7%	8%
20. That the school has a process for improving the quality of education it offers to students?	Satisfied	84%	84%	83%	85%	86%
	Dissatisfied	16%	16%	17%	15%	14%
21. That the bus is a safe place for your child? [Answer if child rides bus]	Satisfied	93%	95%	89%	92%	90%
	Dissatisfied	7%	5%	11%	8%	10%
22. With the overall performance of bus transportation? (time / distance to school) [Answer if child rides bus]	Satisfied	88%	91%	86%	87%	87%
	Dissatisfied	12%	9%	14%	13%	13%

## Parent Survey: Jurisdiction Question Results by Year

		2007/08	2006/07	2005/06	2004/05	2003/04
J 1. With Prairie Land's plan to support learning with technology?	Satisfied	87%	84%	88%	88%	87%
	Dissatisfied	13%	16%	12%	12%	13%
J 2. With the achievement of students on provincial achievement tests and diploma	Satisfied	88%	90%	93%	92%	92%
	Dissatisfied	12%	10%	7%	8%	8%
J 3. That the Board conducts surveys (e.g. transportation), makes use of Roving School Board meetings, holds stakeholder forums and bi-annual School Council/ Board workshops in an effort to involve the public in decision making?	Satisfied	85%	81%	87%	88%	87%
	Dissatisfied	15%	19%	13%	12%	13%
J 4. With your comfort in approaching your trustee with issues?	Satisfied	81%	74%	80%	80%	81%
	Dissatisfied	19%	26%	20%	20%	19%
J 5. That the school is well maintained?	Satisfied	93%	91%	89%	92%	
	Dissatisfied	7%	9%	11%	8%	
J 6a. With the quality of a) Language (English)	Satisfied	93%	94%	92%	94%	95%
	Dissatisfied	7%	6%	8%	6%	5%
J 6b. With the quality of b) Mathematics	Satisfied	90%	94%	94%	92%	93%
	Dissatisfied	10%	6%	6%	8%	7%
J 6c. With the quality of c) Social Studies	Satisfied	96%	95%	93%	96%	95%
	Dissatisfied	4%	5%	7%	4%	5%
J 6d. With the quality of d) Science	Satisfied	93%	94%	92%	93%	92%
	Dissatisfied	7%	6%	8%	7%	8%
J 6e. With the quality of e) Physical Education	Satisfied	96%	93%	95%	91%	92%
	Dissatisfied	4%	7%	5%	9%	8%
J 6f. With the quality of f) Other courses in general	Satisfied	90%	92%	90%	91%	90%
	Dissatisfied	10%	8%	10%	9%	10%
J 6g. With the quality of g) the library service?	Satisfied	95%	94%	95%	94%	93%
	Dissatisfied	5%	6%	5%	6%	7%

# Parent Survey: Special Education Programs & Services Results for This Jurisdiction

n = 33 (2007/08)

		2007/08	2006/07	2005/06	2004/05	2003/04
A. That your child has access to an appropriate service or program?	Satisfied	75%	80%	74%	84%	80%
	Dissatisfied	25%	20%	26%	16%	20%
B. That you were involved in the development of your child's Individual Program Plan (IPP)?	Satisfied	79%	86%	91%	92%	85%
	Dissatisfied	21%	14%	9%	8%	15%
C. That your school effectively coordinates the involvement of other agencies or specialists in providing the above services / programs?	Satisfied	59%	77%	74%	83%	78%
	Dissatisfied	41%	23%	26%	17%	23%
D. With your child's overall progress in the programs provided?	Satisfied	74%	74%	74%	88%	83%
	Dissatisfied	26%	26%	26%	13%	17%
E. With the quality of the services / programs overall?	Satisfied	65%	72%	76%	83%	83%
	Dissatisfied	35%	28%	24%	18%	18%
F. With the teacher assistant support provided to your child in his / her services / program?	Satisfied	66%	79%	69%	80%	83%
	Dissatisfied	34%	21%	31%	20%	17%
G. That your child's Individual Program Plan (IPP) is revised to address his or her changing needs?	Satisfied	69%	83%	83%	89%	78%
	Dissatisfied	31%	17%	17%	11%	22%
H. That it was easy to access services for your child with special needs?	Satisfied	55%	60%	63%	74%	65%
	Dissatisfied	45%	40%	37%	26%	35%
I. That the special education services provided by the school are meeting your child's needs?	Satisfied	53%	60%	64%	78%	80%
	Dissatisfied	47%	40%	36%	23%	20%
J. With the communication you receive about your child's educational progress?	Satisfied	64%	83%	83%	83%	78%
	Dissatisfied	36%	17%	17%	17%	22%

**Staff Survey: Percentage Who Are Very Satisfied or Satisfied**

Vertical lines: Partnership High / Low  
Horizontal Line: Your Jurisdiction's Result

		2004	2005	2006	2007	2008	
<b>1. With the overall communication between the school and the home? (e.g. notices, newsletters, telephone calls)</b>	Partnership High	100%	100%	99%	98%	100%	
	Partnership Low	92%	94%	96%	95%	96%	
	<b>Jurisdiction Result</b>	<b>98%</b>	<b>99%</b>	<b>97%</b>	<b>98%</b>	<b>96%</b>	
	Small Rural Jurisdiction Average	98%	98%	97%	97%	98%	
	Partnership Average	98%	98%	98%	98%	98%	
<b>2. With the overall communication between the jurisdiction and the school?</b>	Partnership High	96%	96%	96%	93%	96%	
	Partnership Low	72%	44%	74%	76%	78%	
	<b>Jurisdiction Result</b>	<b>90%</b>	<b>86%</b>	<b>89%</b>	<b>81%</b>	<b>78%</b>	
	Small Rural Jurisdiction Average	83%	86%	90%	85%	87%	
	Partnership Average	88%	85%	87%	85%	87%	
<b>3. With the opportunities you have to be involved in school decision-making?</b>	Partnership High	93%	91%	93%	89%	90%	
	Partnership Low	67%	79%	75%	78%	82%	
	<b>Jurisdiction Result</b>	<b>86%</b>	<b>85%</b>	<b>91%</b>	<b>89%</b>	<b>90%</b>	
	Small Rural Jurisdiction Average	81%	85%	85%	84%	88%	
	Partnership Average	85%	85%	85%	84%	86%	
<b>4. With the safety of the school environment?</b>	Partnership High	100%	97%	99%	97%	97%	
	Partnership Low	87%	80%	81%	83%	90%	
	<b>Jurisdiction Result</b>	<b>98%</b>	<b>96%</b>	<b>99%</b>	<b>95%</b>	<b>94%</b>	
	Small Rural Jurisdiction Average	92%	93%	96%	94%	95%	
	Partnership Average	93%	92%	93%	92%	94%	
<b>5. That there is a caring atmosphere at the school?</b>	Partnership High	98%	99%	99%	99%	96%	
	Partnership Low	87%	89%	85%	89%	90%	
	<b>Jurisdiction Result</b>	<b>96%</b>	<b>96%</b>	<b>96%</b>	<b>96%</b>	<b>91%</b>	
	Small Rural Jurisdiction Average	93%	95%	95%	94%	95%	
	Partnership Average	95%	95%	94%	94%	93%	

**Staff Survey: Percentage Who Are Very Satisfied or Satisfied**

Vertical lines: Partnership High / Low  
Horizontal Line: Your Jurisdiction's Result

		2004	2005	2006	2007	2008	
<b>6. With the opportunities you have to acquire technology skills?</b>	Partnership High	93%	92%	94%	89%	88%	
	Partnership Low	71%	72%	71%	70%	71%	
	<b>Jurisdiction Result</b>	<b>87%</b>	<b>92%</b>	<b>94%</b>	<b>89%</b>	<b>88%</b>	
	Small Rural Jurisdiction Average	79%	79%	78%	83%	81%	
	Partnership Average	84%	81%	81%	78%	82%	
<b>7. With the way discipline matters are dealt with by school staff?</b>	Partnership High	98%	97%	93%	91%	93%	
	Partnership Low	68%	77%	73%	77%	81%	
	<b>Jurisdiction Result</b>	<b>93%</b>	<b>92%</b>	<b>91%</b>	<b>87%</b>	<b>83%</b>	
	Small Rural Jurisdiction Average	84%	88%	87%	86%	90%	
	Partnership Average	87%	88%	86%	85%	87%	
<b>8. With the way people are welcomed when they visit the school?</b>	Partnership High	100%	99%	100%	99%	99%	
	Partnership Low	93%	94%	94%	94%	95%	
	<b>Jurisdiction Result</b>	<b>98%</b>	<b>98%</b>	<b>100%</b>	<b>98%</b>	<b>97%</b>	
	Small Rural Jurisdiction Average	96%	97%	97%	97%	98%	
	Partnership Average	96%	97%	97%	97%	97%	
<b>9. With the opportunities for you to have input into how money is spent by the school?</b>	Partnership High	93%	87%	88%	85%	89%	
	Partnership Low	62%	77%	75%	75%	79%	
	<b>Jurisdiction Result</b>	<b>77%</b>	<b>81%</b>	<b>84%</b>	<b>85%</b>	<b>89%</b>	
	Small Rural Jurisdiction Average	74%	81%	82%	81%	83%	
	Partnership Average	80%	81%	83%	80%	83%	
<b>10. With your access to professional development activities?</b>	Partnership High	96%	94%	96%	92%	94%	
	Partnership Low	60%	78%	82%	79%	79%	
	<b>Jurisdiction Result</b>	<b>89%</b>	<b>90%</b>	<b>96%</b>	<b>92%</b>	<b>94%</b>	
	Small Rural Jurisdiction Average	82%	87%	88%	85%	87%	
	Partnership Average	89%	89%	90%	88%	90%	

**Staff Survey: Percentage Who Are Very Satisfied or Satisfied**

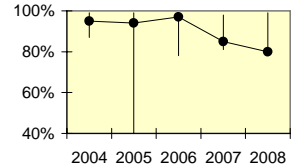
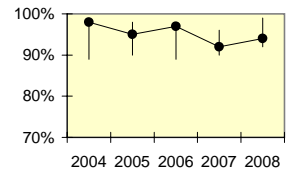
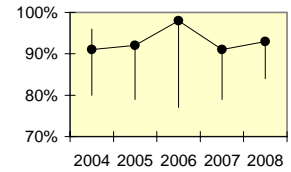
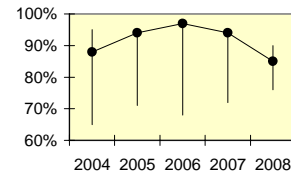
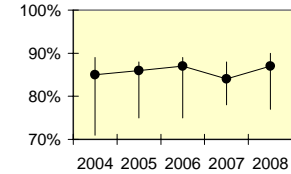
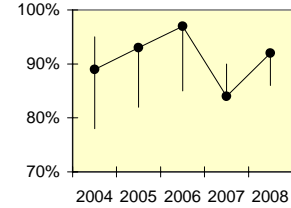
Vertical lines: Partnership High / Low  
Horizontal Line: Your Jurisdiction's Result

		2004	2005	2006	2007	2008	
11.a) With the recognition you receive at the school level for your contributions?	Partnership High	94%	94%	95%	88%	93%	
	Partnership Low	72%	77%	81%	78%	83%	
	<b>Jurisdiction Result</b>	<b>87%</b>	<b>86%</b>	<b>95%</b>	<b>88%</b>	<b>93%</b>	
	Small Rural Jurisdiction Average	84%	84%	87%	84%	88%	
	Partnership Average	86%	86%	87%	85%	87%	
11.b) With the recognition you receive at the jurisdiction level for your contributions?	Partnership High	90%	82%	86%	78%	88%	
	Partnership Low	55%	30%	61%	63%	66%	
	<b>Jurisdiction Result</b>	<b>72%</b>	<b>75%</b>	<b>86%</b>	<b>74%</b>	<b>70%</b>	
	Small Rural Jurisdiction Average	72%	74%	76%	73%	74%	
	Partnership Average	71%	69%	70%	70%	72%	
12. With the involvement of parents within the school community?	Partnership High	96%	94%	94%	96%	94%	
	Partnership Low	72%	80%	77%	73%	73%	
	<b>Jurisdiction Result</b>	<b>83%</b>	<b>83%</b>	<b>82%</b>	<b>91%</b>	<b>82%</b>	
	Small Rural Jurisdiction Average	89%	91%	88%	90%	90%	
	Partnership Average	85%	87%	86%	85%	87%	
13. That the School Council plays a meaningful role in your school?	Partnership High	98%	94%	97%	93%	94%	
	Partnership Low	75%	83%	82%	80%	76%	
	<b>Jurisdiction Result</b>	<b>81%</b>	<b>89%</b>	<b>88%</b>	<b>88%</b>	<b>84%</b>	
	Small Rural Jurisdiction Average	86%	91%	90%	91%	90%	
	Partnership Average	88%	90%	90%	88%	88%	
14. That the jurisdiction's goals, philosophies and policies are implemented consistently?	Partnership High	99%	94%	96%	94%	96%	
	Partnership Low	69%	40%	79%	77%	79%	
	<b>Jurisdiction Result</b>	<b>89%</b>	<b>88%</b>	<b>92%</b>	<b>90%</b>	<b>83%</b>	
	Small Rural Jurisdiction Average	86%	90%	90%	90%	90%	
	Partnership Average	88%	86%	88%	87%	88%	

**Staff Survey: Percentage Who Are Very Satisfied or Satisfied**

Vertical lines: Partnership High / Low  
Horizontal Line: Your Jurisdiction's Result

		2004	2005	2006	2007	2008
<b>15. With the process used to help you maintain and improve your performance (professional growth plan, supervision, and/or evaluation)?</b>	<i>Partnership High</i>	95%	93%	97%	90%	92%
	<i>Partnership Low</i>	78%	82%	85%	84%	86%
	<b>Jurisdiction Result</b>	<b>89%</b>	<b>93%</b>	<b>97%</b>	<b>84%</b>	<b>92%</b>
	<i>Small Rural Jurisdiction Average</i>	85%	86%	89%	88%	90%
	<i>Partnership Average</i>	89%	89%	90%	88%	89%
<b>16. That you have adequate resources to do the job you are assigned?</b>	<i>Partnership High</i>	89%	88%	89%	88%	90%
	<i>Partnership Low</i>	71%	75%	75%	78%	77%
	<b>Jurisdiction Result</b>	<b>85%</b>	<b>86%</b>	<b>87%</b>	<b>84%</b>	<b>87%</b>
	<i>Small Rural Jurisdiction Average</i>	79%	82%	82%	84%	84%
	<i>Partnership Average</i>	79%	79%	81%	82%	84%
<b>17. With the resources available to implement ICT outcomes?</b>	<i>Partnership High</i>	95%	94%	97%	94%	90%
	<i>Partnership Low</i>	65%	71%	68%	72%	76%
	<b>Jurisdiction Result</b>	<b>88%</b>	<b>94%</b>	<b>97%</b>	<b>94%</b>	<b>85%</b>
	<i>Small Rural Jurisdiction Average</i>	76%	80%	78%	82%	85%
	<i>Partnership Average</i>	79%	79%	80%	77%	84%
<b>18. With your skills to implement ICT outcomes?</b>	<i>Partnership High</i>	96%	93%	98%	91%	93%
	<i>Partnership Low</i>	80%	79%	77%	79%	84%
	<b>Jurisdiction Result</b>	<b>91%</b>	<b>92%</b>	<b>98%</b>	<b>91%</b>	<b>93%</b>
	<i>Small Rural Jurisdiction Average</i>	84%	86%	87%	88%	87%
	<i>Partnership Average</i>	85%	85%	86%	84%	88%
<b>19. That your school is a good place to work?</b>	<i>Partnership High</i>	99%	98%	97%	96%	99%
	<i>Partnership Low</i>	89%	90%	89%	90%	92%
	<b>Jurisdiction Result</b>	<b>98%</b>	<b>95%</b>	<b>97%</b>	<b>92%</b>	<b>94%</b>
	<i>Small Rural Jurisdiction Average</i>	94%	95%	95%	94%	96%
	<i>Partnership Average</i>	95%	95%	94%	94%	95%
<b>20. That the jurisdiction is a good place to work?</b>	<i>Partnership High</i>	99%	99%	99%	98%	99%
	<i>Partnership Low</i>	87%	40%	78%	81%	80%
	<b>Jurisdiction Result</b>	<b>95%</b>	<b>94%</b>	<b>97%</b>	<b>85%</b>	<b>80%</b>
	<i>Small Rural Jurisdiction Average</i>	95%	95%	97%	92%	93%
	<i>Partnership Average</i>	94%	92%	92%	91%	91%



**Staff Survey: Percentage Who Are Very Satisfied or Satisfied**

Vertical lines: Partnership High / Low  
Horizontal Line: Your Jurisdiction's Result

		2004	2005	2006	2007	2008	
<b>21. With the overall quality of education offered in your school?</b>	<i>Partnership High</i>	99%	100%	99%	99%	99%	
	<i>Partnership Low</i>	90%	93%	92%	91%	89%	
	<b>Jurisdiction Result</b>	<b>99%</b>	<b>100%</b>	<b>99%</b>	<b>97%</b>	<b>95%</b>	
	<i>Small Rural Jurisdiction Average</i>	97%	98%	97%	97%	97%	
	<i>Partnership Average</i>	98%	98%	97%	96%	97%	
<b>22. With the choice of programs offered to students in the school system?</b>	<i>Partnership High</i>	98%	98%	98%	96%	97%	
	<i>Partnership Low</i>	87%	87%	86%	76%	80%	
	<b>Jurisdiction Result</b>	<b>87%</b>	<b>87%</b>	<b>86%</b>	<b>92%</b>	<b>87%</b>	
	<i>Small Rural Jurisdiction Average</i>	91%	90%	91%	93%	94%	
	<i>Partnership Average</i>	93%	92%	93%	90%	92%	
<b>23. That the school has a process for improving the quality of education it offers to students?</b>	<i>Partnership High</i>	98%	97%	98%	95%	97%	
	<i>Partnership Low</i>	81%	88%	88%	85%	90%	
	<b>Jurisdiction Result</b>	<b>97%</b>	<b>96%</b>	<b>93%</b>	<b>94%</b>	<b>94%</b>	
	<i>Small Rural Jurisdiction Average</i>	93%	94%	93%	92%	93%	
	<i>Partnership Average</i>	94%	94%	94%	93%	94%	

## Staff Survey: Number of Surveys Returned by Jurisdiction by Year

	2007/08		2006/07		2005/06		2004/05		2003/04	
	Count	%	Count	%	Count	%	Count	%	Count	%
Chinook's Edge School Division No. 73	646	25%	574	23%	640	14%	645	15%	602	13%
Christ The Redeemer Catholic Separate Regional Div. No. 3	601	23%	599	24%	547	12%	487	11%	454	10%
East Central Alberta Catholic Separate School Div. No. 16	157	6%	163	6%	167	4%	172	4%	148	3%
Evergreen Catholic Separate Regional Division No. 2	212	8%	184	7%	195	4%	162	4%	136	3%
Northern Gateway Public Schools	398	16%	449	18%						
Peace River School Division No. 10	293	11%	312	12%						
Prairie Land Regional Division No. 25	115	4%	96	4%	92	2%	108	2%	125	3%
St. Thomas Aquinas Roman Catholic Schools	137	5%	150	6%	147	3%	109	2%	134	3%
Clearview School Division No. 71					160	4%	159	4%	165	4%
Golden Hills School Division No. 75					363	8%	396	9%	363	8%
Medicine Hat Catholic Board of Education					171	4%	116	3%	137	3%
Medicine Hat School District No. 76									369	8%
Red Deer Catholic Regional Division No. 39					351	8%	285	6%	332	7%
Red Deer Public School District No. 104					542	12%	533	12%	483	10%
Wetaskiwin Regional Division No. 11					325	7%	344	8%	324	7%
Wild Rose School Division No. 66					359	8%	353	8%	340	7%
Wolf Creek School Division No. 72					491	11%	557	13%	551	12%
Partnership	2559	100%	2527	100%	4550	100%	4426	100%	4663	100%

## Staff Survey: Number of Surveys Returned by School, Position, and Year

	2007/08			School Total	2006/07	2005/06	2004/05	2003/04
	Position							
	Teacher	Support Staff	Not Indicated	School Total	School Total	School Total	School Total	School Total
Altario	3	2	3	8	9	10	12	13
Berry Creek	4	7	2	13	11	10	13	11
Consort	7	3	5	15	22	15	24	25
Delia	4	9	2	15	10	12	18	17
Hanna Primary	2	4	1	7	6	9	7	14
J.C. Charyk	5	6	5	16	11	9	9	16
Morrin	4	5		9	6	8	9	11
Veteran	5	6	1	12	11	11	9	9
Youngstown	5	5	1	11	8	7	7	9
Hanna Outreach					2	1		
Colony Schools	8	1		9				
Jurisdiction Total	47	48	20	115	96	92	108	125

## Staff Survey: Jurisdiction Results by Year

		2007/08	2006/07	2005/06	2004/05	2003/04
1. With the overall communication between the school and the home? (e.g. notices, newsletters, telephone calls)	Satisfied	96%	98%	97%	99%	98%
	Dissatisfied	4%	2%	3%	1%	2%
2. With the overall communication between the jurisdiction and the school?	Satisfied	78%	81%	89%	86%	90%
	Dissatisfied	22%	19%	11%	14%	10%
3. With the opportunities you have to be involved in school decision-making?	Satisfied	90%	89%	91%	85%	86%
	Dissatisfied	10%	11%	9%	15%	14%
4. With the safety of the school environment?	Satisfied	94%	95%	99%	96%	98%
	Dissatisfied	6%	5%	1%	4%	2%
5. That there is a caring atmosphere at the school?	Satisfied	91%	96%	96%	96%	96%
	Dissatisfied	9%	4%	4%	4%	4%
6. With the opportunities you have to acquire technology skills?	Satisfied	88%	89%	94%	92%	87%
	Dissatisfied	12%	11%	6%	8%	13%
7. With the way discipline matters are dealt with by school staff?	Satisfied	83%	87%	91%	92%	93%
	Dissatisfied	17%	13%	9%	8%	7%
8. With the way people are welcomed when they visit the school?	Satisfied	97%	98%	100%	98%	98%
	Dissatisfied	3%	2%		2%	2%
9. With the opportunities for you to have input into how money is spent by the school?	Satisfied	89%	85%	84%	81%	77%
	Dissatisfied	11%	15%	16%	19%	23%
10. With your access to professional development activities?	Satisfied	94%	92%	96%	90%	89%
	Dissatisfied	6%	8%	4%	10%	11%
11.a) With the recognition you receive at the school level for your contributions?	Satisfied	93%	88%	95%	86%	87%
	Dissatisfied	7%	12%	5%	14%	13%
11.b) With the recognition you receive at the jurisdiction level for your contributions?	Satisfied	70%	74%	86%	75%	72%
	Dissatisfied	30%	26%	14%	25%	28%
12. With the involvement of parents within the school community?	Satisfied	82%	91%	82%	83%	83%
	Dissatisfied	18%	9%	18%	17%	17%
13. That the School Council plays a meaningful role in your school?	Satisfied	84%	88%	88%	89%	81%
	Dissatisfied	16%	13%	12%	11%	19%
14. That the jurisdiction's goals, philosophies and policies are implemented consistently?	Satisfied	83%	90%	92%	88%	89%
	Dissatisfied	17%	10%	8%	12%	11%
15. With the process used to help you maintain and improve your performance (prof. growth plan, supervision, and/or evaluation)?	Satisfied	92%	84%	97%	93%	89%
	Dissatisfied	8%	16%	3%	7%	11%
16. That you have adequate resources to do the job you are assigned?	Satisfied	87%	84%	87%	86%	85%
	Dissatisfied	13%	16%	13%	14%	15%
17. With the resources available to implement ICT outcomes?	Satisfied	85%	94%	97%	94%	88%
	Dissatisfied	15%	6%	3%	6%	12%
18. With your skills to implement ICT outcomes?	Satisfied	93%	91%	98%	92%	91%
	Dissatisfied	7%	9%	2%	8%	9%
19. That your school is a good place to work?	Satisfied	94%	92%	97%	95%	98%
	Dissatisfied	6%	8%	3%	5%	2%
20. That the jurisdiction is a good place to work?	Satisfied	80%	85%	97%	94%	95%
	Dissatisfied	20%	15%	3%	6%	5%
21. With the overall quality of education offered in your school?	Satisfied	95%	97%	99%	100%	99%
	Dissatisfied	5%	3%	1%		1%
22. With the choice of programs offered to students in the school system?	Satisfied	87%	92%	86%	87%	87%
	Dissatisfied	13%	8%	14%	13%	13%
23. That the school has a process for improving the quality of education it offers to students?	Satisfied	94%	94%	93%	96%	97%
	Dissatisfied	6%	6%	7%	4%	3%
J 1. That the school is well maintained?	Satisfied	86%	86%	91%	93%	
	Dissatisfied	14%	14%	9%	7%	
J 2. That students are learning the skills they will need when they leave school?	Satisfied	92%	97%	99%	99%	
	Dissatisfied	8%	3%	1%	1%	